

Santa Paula Unified School District

Framework for the Future

TABLE OF CONTENTS

Vision & Mission	3
Letter from the Superintendent	4
Process	5-6
Learner Profile	7-8
Learning Model	9
Success Pillars	10





Mission

The Santa Paula Unified School District, in collaboration with educators, parents, and the community, will prepare all students academically, socially, and emotionally for college, careers, global citizenship, leadership, and lifelong learning. The district will use its resources to provide all students with diverse, equitable, differentiated experiences, and learning opportunities by a highly skilled educational team in a safe and supportive learning environment while remaining fiscally responsible.

Vision

Santa Paula Unified School District is committed to serving every student every day.



Dear Santa Paula USD Community,

I am eager to share the inspiring and transformative ways the Santa Paula Unified School District embraces the implementation of enriching learning experiences that nurture the development of the whole child. Through the development and implementation of the **SPUSD K-12 Learner Profile**, we have embraced a shared commitment to cultivate students to embody the qualities of Compassionate Collaborators, Courageous Communicators, Confident Learners, Creative Problem Solvers, and Cooperative Global Citizens.

In our district, academics are the foundation of student learning but educating students goes beyond academics. Our aim is to shape well-rounded individuals equipped with the essential life skills necessary for success in the 21st century. The K-12 Learner Profile provides a comprehensive framework that guides our approach to education, ensuring that our students graduate with a strong foundation in key competencies.

- **Compassionate Collaboration** is at the heart of our educational philosophy. We encourage our students to empathize with others, appreciate diversity, and work collaboratively to find innovative solutions to real-world challenges.
- **Courageous Communication** is nurtured through open dialogue, debates, and engaging classroom discussions. Students are encouraged to express their ideas confidently, listen actively, and respect differing viewpoints.
- **Confident Learning** is a core tenet of our educational approach. We foster an environment that encourages curiosity, critical thinking, and a growth mindset. Students are taught to embrace challenges, learn from failures, and celebrate their successes.
- **Creative Problem Solving** is a skill we emphasize to prepare our students for a rapidly evolving world. We encourage them to think creatively, analyze situations, and devise innovative solutions.
- **Cooperative Global Citizenship** is an essential aspect of our vision for education. Our aim is to develop responsible, globally aware citizens who understand their role in an interconnected world. Students learn about diverse cultures, appreciate the beauty of different perspectives, and are encouraged to participate in initiatives promoting global harmony and sustainability.

We are proud of the dedication and efforts of our educators, staff, and community members in helping us realize this vision. Together, we strive to create an educational environment that nurtures and celebrates every student's unique potential.

Thank you for your continued support and partnership in shaping the future of our community through education.

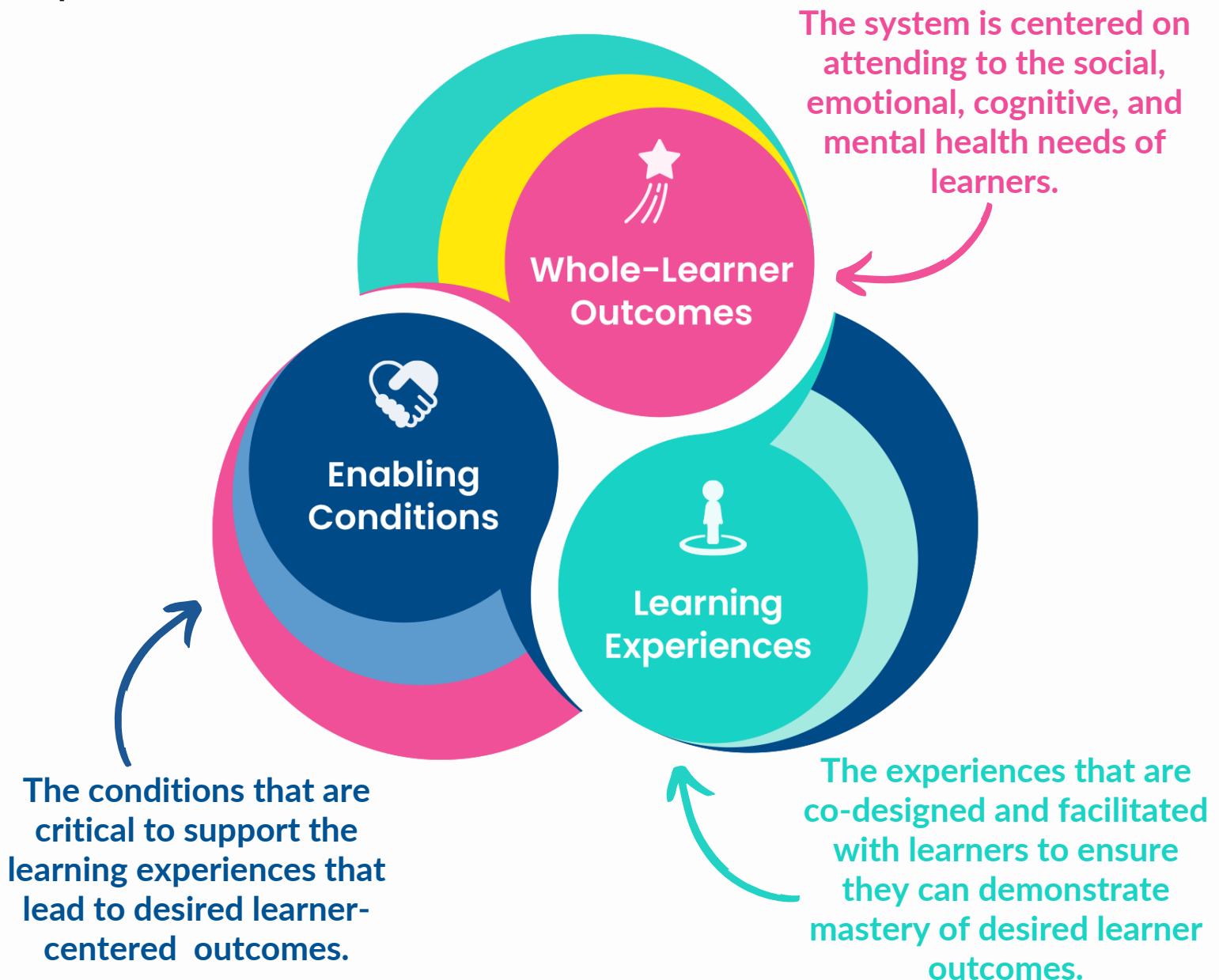
Sincerely,

Jeff Weinstein

Jeff Weinstein, Superintendent

OUR PROCESS

In the Fall of 2022, Santa Paula Unified School District committed to defining a framework that would bring their mission to life, “to prepare all students academically, socially, and emotionally for college, careers, global citizenship, leadership, and lifelong learning.” **This Framework includes these key components:**



Over the course of 6 months, a broad range of stakeholders including staff, students, and community members met to listen, learn, design, iterate and ultimately create the SPUSD Learner Profile and Learning Model.

This workstream included a significant investment of time and energy which included:

- Several **student forums** where 79 students, grades 3 - 12 shared their insights about what was working and what could be improved in Santa Paula. Several themes emerged as a result of these listening sessions. Students wanted pathways, purpose in their work and relevance in what they were learning.
- 1863 **student responses** to a learner-centered, self-assessment on the areas of agency, collaboration and problem solving
- 7 days of meetings, including 2 full days, with the **guiding coalition** to take learnings and draft the framework elements. Key themes that were identified as important to the Santa Paula community were pride, hope, and heart.

It is with great pride, excitement and dedication that we unveil the Santa Paula Unified Framework for the Future that will enable us to “serve every student, every day.”



LEARNER PROFILE



LEARNER PROFILE, OUTCOMES, & COMPETENCIES

Cooperative Global Citizens

Utilize academic, multicultural, social, and self knowledge to positively impact communities.

- Demonstrate empathy and respect for diversity
- Participate in opportunities to positively impact the community
- Evaluate the impact of decisions and actions on individuals and communities
- Build civic and global knowledge

Compassionate Collaborators

Challenge themselves to lead with empathy and encourage the diverse strengths of others.

- Actively listen to understand (and ask questions)
- Share responsibility among team members leveraging everyone's strengths
- Contribute to collaborative teams
- Respectfully exchange ideas to encourage diversity of thought within a group

Courageous Communicators

Use their perspectives and privileges to advocate for inclusivity, safety, and belonging.

- Consider purpose and audience in communication mode and style
- Use language skills to effectively communicate ideas
- Develop a clear and organized message
- Draw on a variety of diverse sources and evidence

Creative Problem Solvers

Amplify their academic knowledge, imagination, play, and ingenuity to strategically generate new solutions for emerging and complex problems.

- Critically examine sources of information to ensure accuracy and relevance
- Engage in brainstorming and divergent thinking
- Understands the benefit of a growth mindset and productive struggle to persist throughout the learning process
- Generate and validate new ideas, creative solutions, and evaluate their impact

Confident Learners

Are empowered, lifelong learners who ask questions, take risks, seek diverse information and are persistent through challenges.

- Leverage feedback and reflection to improve and learn from mistakes
- Make choices and prioritizes based on self-reflection, interests, goals, and responsibilities
- Understand that innovation often involves stepping outside of one's comfort zone, takes calculated risks and embraces uncertainty
- Effectively manages their time and balances their learning commitments with other responsibilities



LEARNING MODEL & EDUCATOR COMPETENCIES



Student-Centered

Learning is co-constructed based on each learner's unique strengths, skills, interests, and needs.

- Develop learner agency
- Amplify learner voice
- Customize the learning experience

Competency-Based

Learning is driven by evidence-based instruction, assessment, and feedback cycle based on progress toward desired knowledge, skills, and dispositions.

- Use assessment and data as tools for learning
- Plan with a competency- based approach
- Design performance- based assessments

Authentic

Meaningful, relevant learning grounded in real-world challenges and applications for authentic audiences.

- Design real-world learning experiences
- Promote anytime/anywhere learning
- Spark collaboration

Inclusive & Equitable

Learning communities are collaborative and culturally relevant, where every learner feels they belong and can tap into their full potential, contributing to the collective success of their community.

- Nurture a meaningful and engaging learning community
- Cultivate a sense of belonging
- Partner with learners to reach their full potential

We believe this is what learning should be in order to achieve the outcomes defined in our Learner Profile.

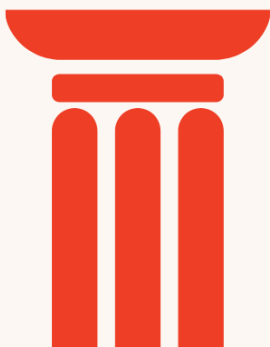
PILLARS OF SUCCESS

Our pillars of success are the fundamental principles and areas of focus that contribute to the overall achievement, growth, and well-being of students, educators, and the community



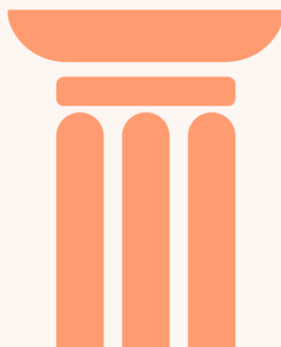
Whole Learner

Creating lasting and meaningful effects on students' cultural, intellectual, emotional, and social development.



Empowered Staff

Promoting agency, providing support and resources to innovate and contribute meaningfully.



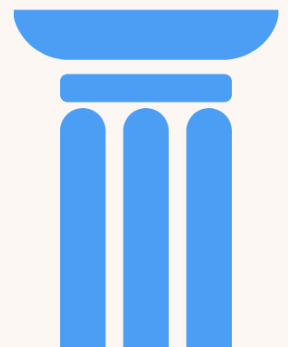
Shared Responsibility

Cultivating a culture of inclusiveness and engagement for all members of the SPUSD community.



Effective Systems

Prioritizing student growth, fostering a culture of collaboration, and focusing on continuous improvement.





CREATED IN PARTNERSHIP WITH:



Learner-Centered
COLLABORATIVE



————— VISIT US AT: —————



www.santapaulausd.org/