



BONSALL
UNIFIED SCHOOL DISTRICT



FRAMEWORK
FOR THE FUTURE



Table of Contents

- 3** Mission and Vision
- 4** Bonsall Unified School District Learner Profile
- 5** Bonsall Unified School District Learner Profile Definitions
- 11** Learning Model



Bonsall Unified School District

Vision

5 Essential Components

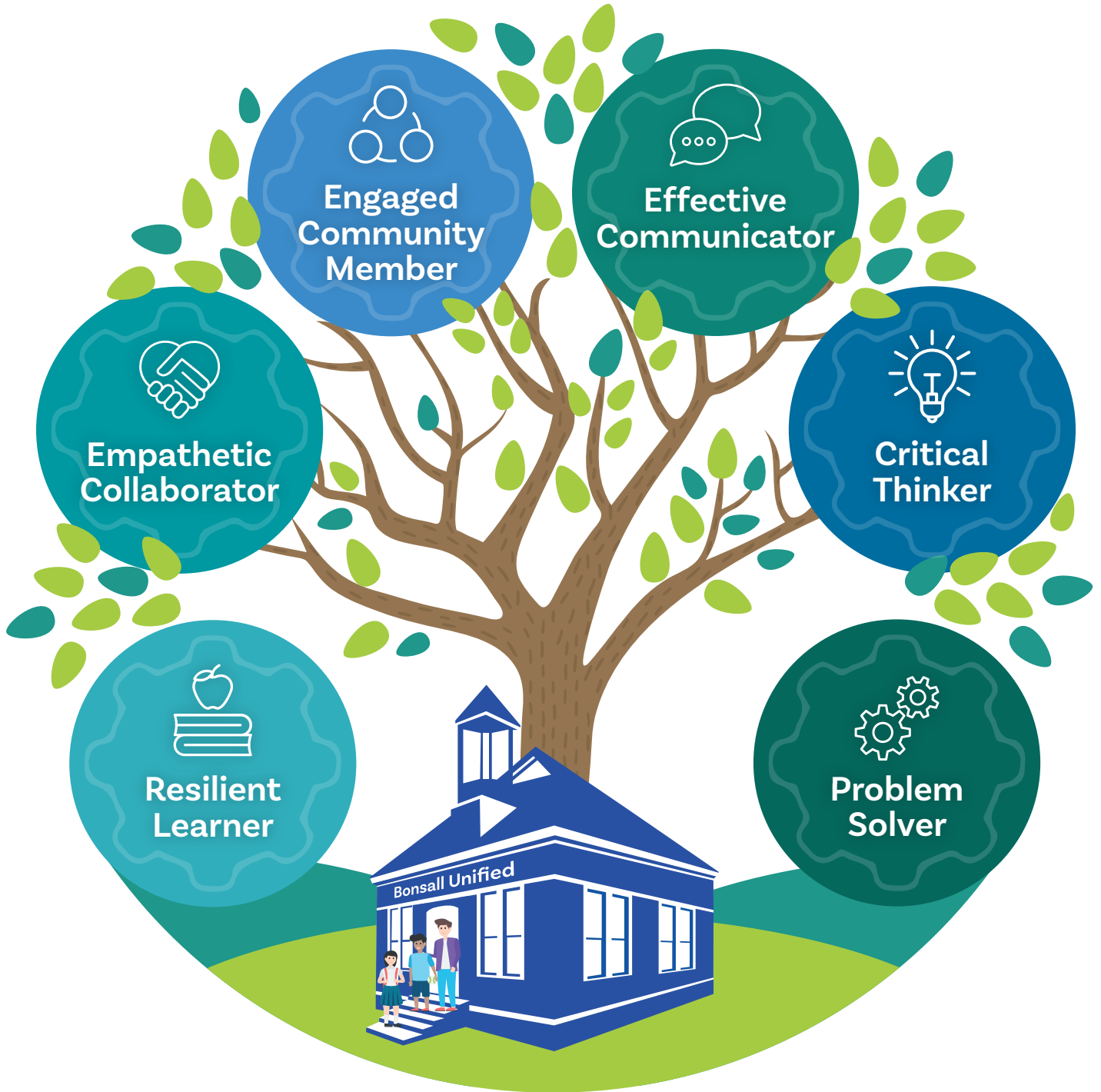
- Comprehensive K-12 Curriculum
- Rigorous Instruction and Assessment
- Collaboration
- Safe and Orderly Schools
- Engaged Family and Community Involvement

Mission

Empower all students to achieve their maximum learning potential.



Learner Profile



◀ Student Artwork Prototype





Resilient Learner

I persist and view setbacks as opportunities for growth.

- Sets and achieves academic and personal goals.
- Demonstrates strength in the face of difficult situations.
- Leverages challenges as opportunities for growth
- Practices self reflection in pursuit of success



Empathetic Collaborator

I actively listen to others' ideas, contribute my own ideas, and work together with others to achieve a common goal.

- Accountable for commitments to myself and my community
- Encourages by giving, receiving, and implementing constructive and actionable feedback
- Seeks diverse perspectives and listens with empathy



Engaged Community Member

**I contribute to and serve both my
local and global community.**

- Understands the diverse needs of their various communities
- Recognizes what can be done to support their community and take a proactive role to make positive change
- Develops and implement plans to improve communities overall



Effective Communicator

I am an effective listener, speaker, writer, and creator in all media.

- Confidently articulates thoughts and ideas using oral, written, and non-verbal communication skills
- Actively listens with intent to understand and evaluate others' perspectives and positions
- Demonstrates respect and dignity for all people



Critical Thinker

I am a critical thinker who is informed by facts and reliable information.

- Remains curious and engaged in the pursuit of knowledge
- Effectively analyzes and evaluates data and other information



Problem Solver

I am a creative thinker, innovative designer and solution-focused problem solver.

- Confronts challenges to produce meaningful success
- Identifies multiple solutions to problems
- Implements a thoughtful plan in pursuit of a solution
- Acknowledges various methods to overcome setbacks

CREATED IN PARTNERSHIP WITH:



Learner-Centered
COLLABORATIVE

— VISIT US AT: —

BONSALL
UNIFIED SCHOOL DISTRICT