

Impact Report

2022



**Celebrating a
Year of
Learner-Centered
Collaboration**



TABLE OF CONTENTS

LETTER FROM EXECUTIVES	3
------------------------	---

WHO WE ARE	4
------------	---

OUR PARTNERS	6
--------------	---

RESEARCH & DEVELOPMENT	18
------------------------	----

CONVENINGS & INNOVATION HUBS	20
------------------------------	----

PROFESSIONAL LEARNING	22
-----------------------	----

BOARD & ADVISORY COUNCIL	24
--------------------------	----

ACKNOWLEDGEMENTS	26
------------------	----

Letter from Executives

As the world continues to evolve and change in dynamic ways, there is an increasingly urgent call to **meet learners where they are** and equip them with the knowledge, skills, and habits critical for success in work, life, and citizenship. This aspiration is what drives our work at Learner-Centered Collaborative.

We have **impacted over 2 million students and 150,000 educators** through the support and resources we offer our growing network of 150 partners in their shift towards learner-centered education. We have elevated student voice to drive school redesign efforts and innovation across districts, fostered discussion and collaboration among educators to observe and create learner-centered experiences, and built leadership capacity at the state and district level to support implementation efforts of personalized learning.

Today, we have the ability and responsibility to reimagine, reinvent, and realign our learning experiences to best serve each and every learner. We hope that as you read more about our services and impact from this year, you will see that **change starts by empowering people**—from young learners to educators, administrators, and community members.

In Collaboration,
Devin + Katie



Devin Vodicka | CEO



Katie Martin | CIO

“
We have the ability and responsibility to reimagine, reinvent, and realign learning experiences for all learners.
”



WHO WE ARE

Our Vision

*We envision **education ecosystems** that empower all learners to know who they are, thrive in community, and actively engage in the world as their best selves.*

Our Mission

We partner with educators to **define** whole-learner outcomes, **design** meaningful learning experiences, and **create** the enabling conditions for their unique journey to inclusive and equitable learner-centered education.

Our Values

We are trusted and responsible partners.

We are curious and humble learners.

We approach our work with courage.

We build inclusive communities.

We are impact-driven.



Our Story

Our team has decades of expertise in education from a variety of sectors including technology, policy, administration, and teaching. From these diverse experiences emerged a shared understanding: **to truly develop and grow unique individuals we cannot teach in a standardized way.** We are thus guided by the persistent truth that a learner-centered approach is the foundation for a successful, thriving learning community.

Learner-Centered Collaborative builds and expands upon the work our team has been doing for years with partner schools across the country. Recognizing the complexity of change, driven by what's best for learners, and informed by research and practice, we work closely with schools, districts, and states to **find their new way forward.** Our framework serves as a blueprint for our partners as they build out their unique learning models.

Our Learner-Centered Framework



[Explore Framework](#)

Whole-Learner Outcomes

The system is centered on attending to the social, emotional, cognitive, and mental health needs of learners.

Learning Experiences

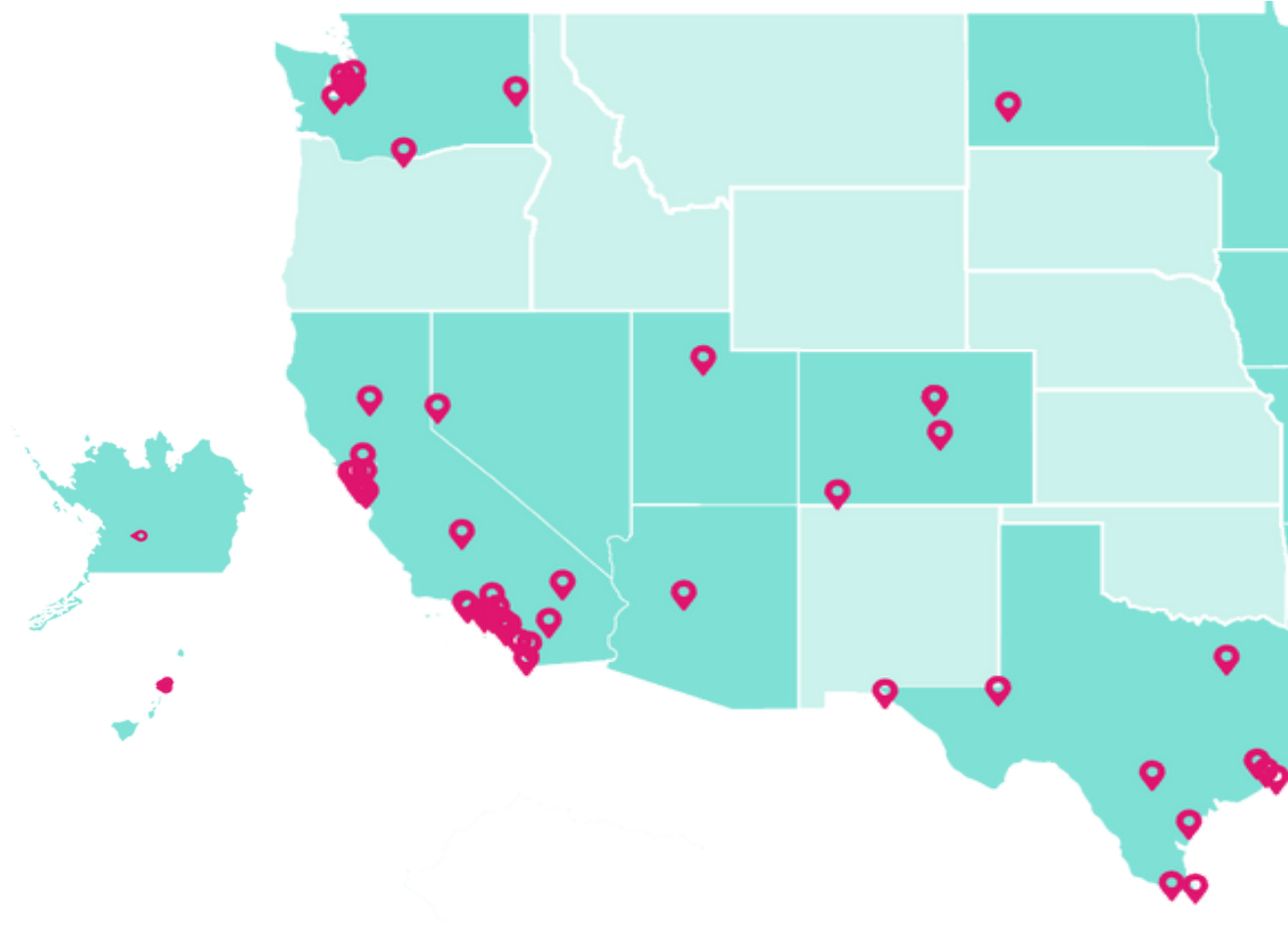
The conditions that are critical to support the learning experiences that lead to desired learner-centered outcomes.

Enabling Conditions

The experiences that are co-designed and facilitated with learners to ensure they can demonstrate mastery of desired learner outcomes.

Our Partners

Our diverse and growing community of urban, and suburban schools, districts, and organizations



2021–2022 Partners

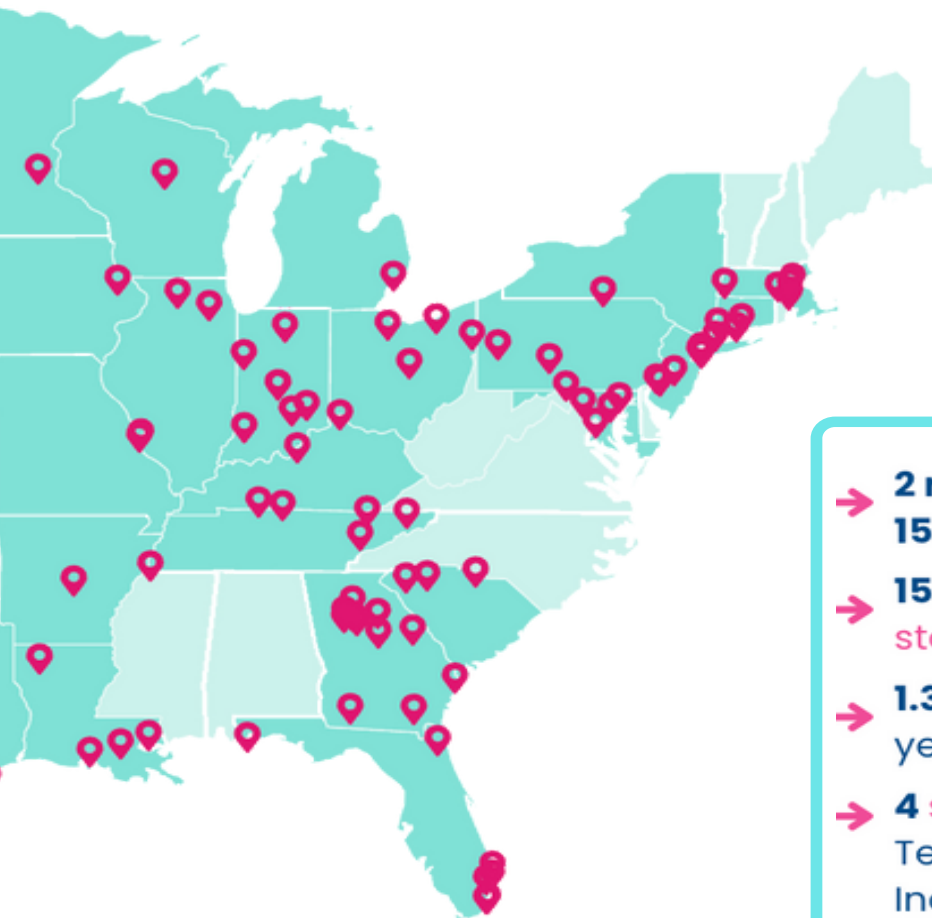
Age of Learning
American Healthcare Documentation Professionals Group
Allen County Schools
Archdiocese San Antonio Education Office
Arizona State University
Ascension Christian School
Bartholomew Consolidated School Corporation
Bonsall Unified School District
Bristow Group
Brooklyn Center Community Schools
Butler Area School District
Chico Country Day School
Christina Seix Academy
Clear Creek Independent School District
Cold Spring School
Compass Charter Schools
Deer Lakes School District
DeKalb County School District
Design39Campus
Discovery School
Durango School District 9 – R
El Paso Leadership Academy
El Segundo Unified School District

Embark Education
Escondido Unified School District
Estem Charter High School
Forsyth County Schools
Fraser Public School District
Frederick County Public Schools
Glenbrook School
Greensburg Community School District
Hamilton County Education Service Center
Harford County Public School District
Harkham Hillel Hebrew Academy
Hawai'i State Public Charter School Commission
Higher Ground Education
Honors Academy of Literature
Horseheads Central School District
Houston Independent School District
Humboldt Unified School District
Imagination Lab School
Indiana Department of Education
& America Succeeds
Keys School
Kingsport City Schools
Knox County Career Center
Kohelet Yeshiva

La Piazza Academy
Laguna Beach Unified
Lighthouse Charter School
Lindbergh Schools
Lindsay Unified School District
Logan County Schools
Luria Academy of Brooklyn
Lytle Independent School District
Mālama Honua Charter School
Malden School District
Maplewood Richmond Heights School District
Mead School
Menlo Park City School District
Meridian School
Mesa Union School District
Metropolitan School District
Township
Middlesboro Independent Schools
Millis Public School
Mineola Public School
Minerva Institute for Research
Monrovia Unified School District
Mooseheart Child City
Mount Vernon School

Partners

Partners spans public, private, charter, districts, and states across the nation



- **2 million** students and **150,000** educators impacted
- **150+** partnerships in **30+** states across the U.S.
- **1.3x** partner network growth year over year
- **4** state-level partnerships in Texas, Utah, Hawaii, and Indiana

School District
Schools

District

Brooklyn

School District
er School

at
d Heights School

District

istrict
istrict of Wayne

dent Schools

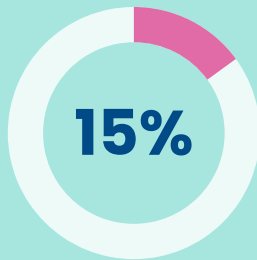
s
Research & Scholarship
ool District
y & School

Next Generation Learning Challenges
North Knox Junior Senior High School
Northlake Christian School
Oconee County School District
Odyssey Academy Galveston
Odyssey STEM Academy
Olympia School District
Orange County Department
of Education
Paramount Unified School District
Peninsula School District
Philmore Academy
Pickens County Schools
Portfolio School
PREP Academy
Putnam County Charter School System
RESA
Rockdale County Public School District
Rooted School Indianapolis
Saint Andrew's Episcopal School
San Bernardino City Unified
Santa Ana Unified School District
Santa Paula Unified School District
Savannah-Chatham County Public
Schools

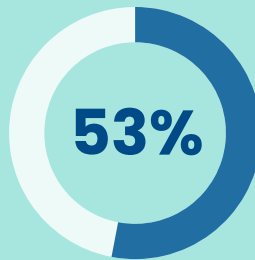
SEEQs Charter School
Smart Computers
South Kitsap Schools
South Peninsula Hebrew Day School
South Texas Independent School District
Spark Academy
Spring Branch Independent School District
Tamim Academy
The Hewitt School
The Innovative School of Temple Beth
Sholom
The Quad Preparatory School
Tri County Regional Vocational Technical
TxLX (Texas Learning Exchange)
Utah State Board of Education
Vanguard Career Center
W.I.D.E. School
Wausau School District
Wayland Public School District
Western Dubuque Community School
District
Wirtz Elementary School
Wooster School
WorldWide Therapy Online
Yeshivat Meor Chaim

Our Impact

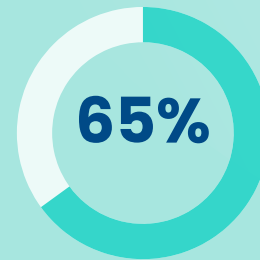
Our partnerships help build inclusive and equitable communities. In our partner schools:



of all students are
**English-Language
Learners**



of all students
receive **Free &
Reduced Lunch**

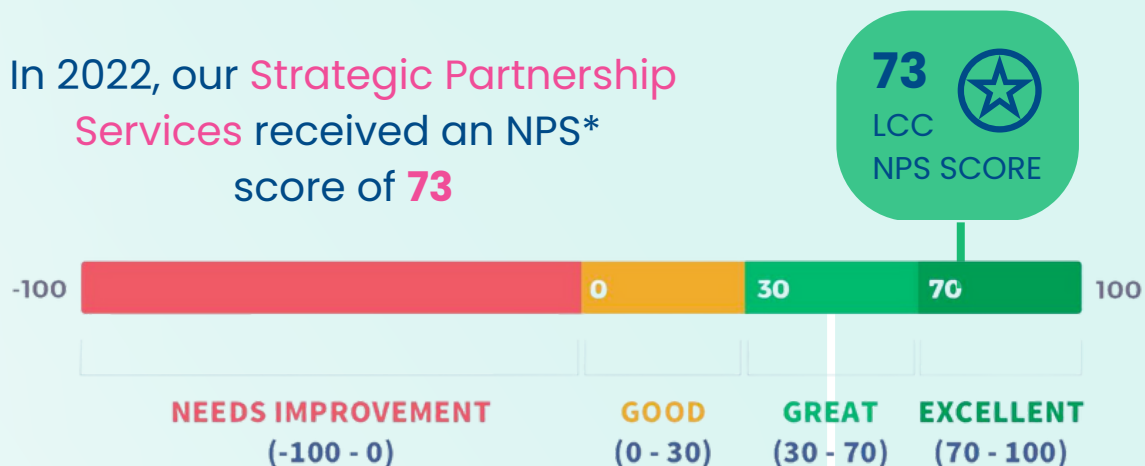


of all students are
Non-White

Our work is impact-driven and consistently informed by data and feedback.

Partner Satisfaction

In 2022, our Strategic Partnership Services received an NPS* score of **73**



62

Industry average for
consulting
organizations

*NET PROMOTOR SCORE (NPS) is an industry standard to gauge customer satisfaction

What Our Partners Are Saying

Expert Facilitation in Virtual Settings

"Within the constraints provided by primarily virtual interactions, [they have] done a marvelous job at **connecting** with us to ensure that the learning we are experiencing is **meaningful**."

"**High quality** virtual training that was relevant and engaging"
"I've **learned** about engaging learners online by watching [them] present."

Puts Relationships First

"Great **thought partner** and sounding board for me"
"[The team has] been a great asset in **supporting our leadership team** and has **fostered these relationships** to work towards positive outcomes."

Meets Partner's Specific Needs

"Balanced a difficult line of being **empathetic & compassionate** to our needs, while **challenging previous notions** that led to productive struggle."

"**Took the time** to get to know our training needs"

"Taking input on the design of the sessions with our team and **crafting the work around that input**"

Utah State Board of Education

Building Leadership Team Capacity at the State Level

At a Glance

The leadership team at USBE recognized that one first step toward implementing PCBL practices throughout the state was to infuse them in their professional learning. Find inspiration in their work through these resources:



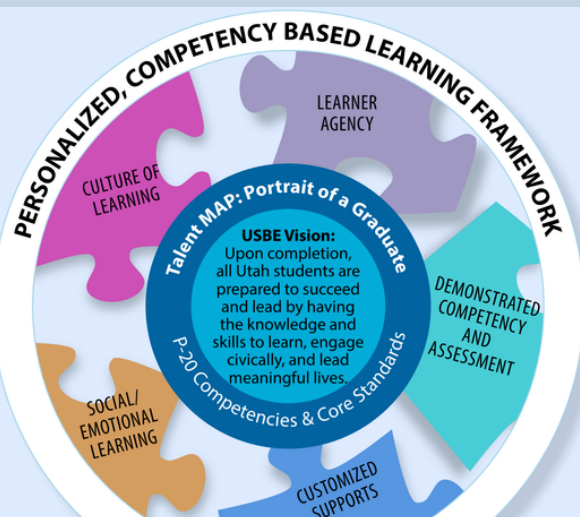
PCBL Framework



Portrait of a Graduate



Learning Walk Tool



Utah's PCBL Framework

OUR GOAL

The Utah State Board of Education (USBE) partnered with Learner-Centered Collaborative to build capacity and enable USBE specialists and coordinators to support implementation of the state's Personalized, Competency-Based Learning (PCBL) framework, a learning model that includes 5 components necessary to nurture learner-centered outcomes as defined in the state's Portrait of a Graduate. The partnership facilitated virtual and in-person professional learning sessions, Pathways for Educators courses, and on-site Learning Walk observations and reflections.

OUR APPROACH

1

Professional Learning Workshops

These sessions were designed to model and simulate PCBL strategies in their professional learning, align on implementation approaches, and explore authentic examples in classrooms.

2

Learning Walks

On-site Learning Walks helped state-level leaders to see and experience real examples of PCBL in the classroom and build the skills towards identifying PCBL elements in action.

3

Pathways for Educators

The courses explored ways to build learner agency, demonstrate competency, and align assessment to desired outcomes, all while encouraging educators to test learning experiences in the classroom and build portfolios reflecting on these experiences.



*For too long, we've
been sending
teachers home
tired and students
home bored.*

Michael Hakkarinen,
PCBL Specialist, USBE



RESULTS AND IMPACT

- > State leaders participating in workshops committed to infuse PCBL in professional learning sessions in the next year.
- > Session participants reported increased confidence exploring and supporting PCBL in Utah LEAs.
- > Educators experienced PCBL firsthand, embraced cross-school collaboration, and tested their learning in real time.

Key Metrics



4

Learning Walk sites won Utah's recognition for innovative learning experiences



90+

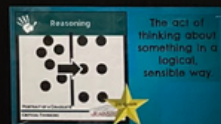
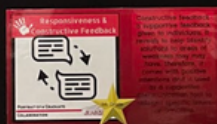
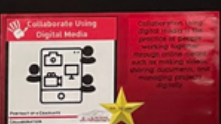
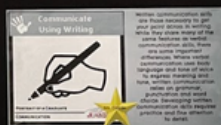
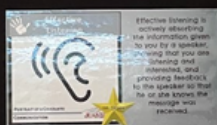
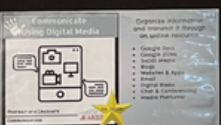
PCBL strategies tested in Utah classrooms



140

USBE leaders participated in over 70 professional learning workshops

Portrait of a 5th Grader



Utah State Board of Education

[Read the full story](#)

To learn more, visit:
www.schools.utah.gov

Logan County Schools

Creating a Profile of Success Throughout a District

At a Glance

An opt-in group of educators brought about learner-centered change across the district through a Profile of Success. Find inspiration in their work through these resources:



[Profile of Success](#)



[Defense of Learning](#)



[Learning Model](#)



Learning Walks facilitated by our team, including CIO Katie Martin.

OUR GOAL

Logan County Schools partnered with Learner-Centered Collaborative to develop a Profile of Success driven by an opt-in team of educators known as the LC Innovators. Recognizing that success hinges on buy-in from the entire learning community, the team regularly tests, reflects, shares, and refines their work with input from all school sites with convenings led by Learner-Centered Collaborative. This collaboration has grounded the Profile of Success and the Success Indicators with clear alignment that enables the Learning Model to both double as student and educator competencies driving work throughout the district.

OUR APPROACH

1

Profile of Success

The Profile of Success aligns student and educator competencies and clearly explains Success Indicators in a comprehensive Learning Model. The site shares real classroom examples to elevate and inspire educators.

2

Learning Walks

With a clear Profile of Success, LC Innovators sought to identify models and examples in practice through Learning Walks facilitated by our team.

3

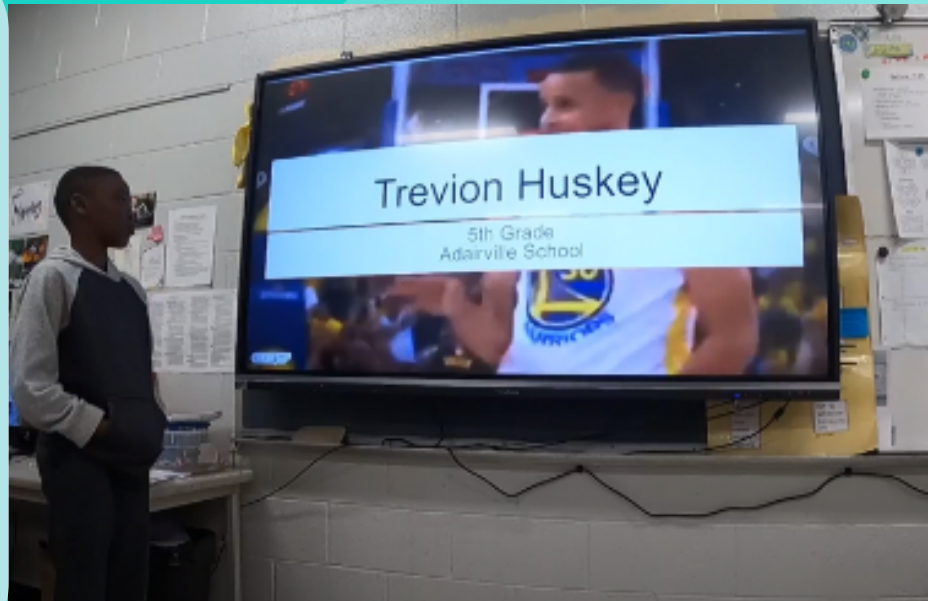
Defense of Learning

Demonstrating student competencies aligned to the Profile of Success, students in 5th, 8th, and 12th grade use the shared site to build their electronic portfolios and present a Defense of Learning.



*We aren't just
creating students.
We are creating
better citizens.*

Paul Mullins, Superintendent,
Logan County Schools



RESULTS AND IMPACT

- > In only two years, the LC Innovators identified the needs, sought input, and created a shared vision that each site team was able to put into action.
- > Multiple PLCs (content and grade specific) met with cross-district groupings on competencies as they shared resources, reflected, and decided on actionable next steps.
- > Digital Coaches have created a shared site for teachers and students to find resources, templates, and examples to build electronic portfolios and draw inspiration for their Defenses of Learning.



Key Metrics



100%

of 5th, 8th, and 12th
graders presented
their Defense of
Learning



6

Educator
Competencies
were identified in
support of the
Profile of Success



[Read the full story](#)

To learn more, visit:
www.logan.kyschools.us

Santa Ana Unified School District

Listening to Learners to Drive Districtwide Innovation

At a Glance

Santa Ana Unified elevated the voices of all learners to incorporate feedback and observations on existing structures and practices that would inform innovation throughout the district. Find inspiration in their work through these resources:



[Learning Walk Itinerary](#)



[Learning in Action](#)



Learning walk debrief session between classroom visits.

OUR GOAL

Santa Ana Unified tapped Learner-Centered Collaborative to support a learner-centered journey guided by learner input that would prioritize areas of greatest need and scale from there. This collaborative partnership works to elevate the voices of all learners as the district implements its graduate profile in pursuit of more learner-centered experiences throughout the learning community. Through this approach, the district is on its way to better meeting its learners where they are.

OUR APPROACH

Student Forums

1

To understand the summer school experience, SAUSD conducted student forums and educator interviews. These insights have enabled the work to progress with application throughout the entire year.

Learning Walks

2

With Learning Walks, the Educational Options Innovation Cohort uncovered bright spot practices in the classroom that could be replicated across the district and identified opportunities for growth.

Leadership Coaching

3

SAUSD's leadership team prioritizes building internal capacity and deepening leadership alignment through greater coherence of their mission, vision, values, and goals and building on relational trust.



I really enjoy the opportunity to work with other teams and learn about some of the ways they are moving forward with personalized learning.

Kimberly Garcia, Principal,
Círculos High School



RESULTS AND IMPACT



- Streamlined goals and metrics from a variety of sources into an aligned scorecard with focused and clear success metrics that can be gathered over time.
- Gathered anecdotal and quantitative benchmark summer school data to measure success of evolved design.
- Team has developed internal capacity and desire to expand on Learning Walk practice as a way of learning and identifying strengths and opportunities.



Key Metrics



40

students in grades 1-8 were invited to share their experiences in Student Forums



50

principals committed to building relational trust and increasing collaboration at monthly meetings co-facilitated with us



100

leaders across the district participated in Learning Walks



[Read the full story](#)

To learn more, visit:
www.sausd.us

Synergy @ Mineola Public Schools

Creating a Learner-Centered High School by Listening to Learners

At a Glance

Recognizing the value of a personalized, competency-based, learner-driven model of education the Mineola School District prioritized elevating student voice and building upon existing strengths in the design of Synergy High School. Find inspiration in their work through these resources:



[Badge Books](#)



[What is Synergy?](#)



[Learning in Action](#)



Empathy interviews with students

OUR GOAL



Building upon the district vision for Synergy, this collaboration tapped into student voice through empathy interviews with educators, students, and administrators and leveraged the design thinking process facilitated by Learner-Centered Collaborative. Seeing success among the younger grades drives Mineola's current work to replicate these learner-centered experiences across the district and to show learners that their progress is impacted by their own work and learning.

OUR APPROACH



Empathy Interviews

1

Empathy interviews yielded processes and structures that supported learners to design their daily schedule, access curriculum, and engage in meaningful learning experiences based on their needs.

Learning Walks

2

Informing next steps based on needs and desires that emerged from the empathy interviews, Learning Walks uncovered "Bright Spot" practices that were already happening in the district.

Strategic Planning

3

The team is focused on the enabling conditions including clear vision and learning model, aligned policies, use of time and space, and relational trust building practices such as building time for reflection and check-ins into the schedule.



I'm learning how to help myself, how to take control of my situations, use my resources, and be what I'm capable of being.

Synergy Student



RESULTS AND IMPACT



- Conducted a diagnostic assessment of vision, resources, and instructional practices to highlight "Bright Spots" and identify next steps to evolve the competency-based system.
- Promoted agreement on norms, structures, and routines including the roles of all stakeholders, schedules, and learning opportunities through design sessions.
- Illustrated the principles of the learning model through the exercise "A Day in the Life of a Synergy Learner."



Key Metrics



15

empathy interviews conducted with students to better understand the unique needs and experiences of each individual



2

days of design sessions with educators and district leadership



[Read the full story](#)

To learn more, visit:
www.mineola.k12.ny.us

Research & Development

Success hinges on using research and learning sciences as our guide, sharing ideas, resources, and best practices, while elevating student voice to inform the path forward.

2021–22 Highlights

Over 50%

of our team has published content that is impacting learner-centered conversations

3

award-winning books shaping the conversation on learner-centered leadership

100+

free tools and resources for educators and leaders

Season 1

of the Learner-Centered Collaborative Podcast

Benchmark Data

gathered on key partner metrics through proprietary student and leadership survey

Diagnostic

developed and launched to inform vision and implementation within districts

Framework

rooted in **3** whole-learner outcomes, **4** learning experiences, and **10** enabling conditions.

What's Possible

- Curate learner-centered school models library
- Design learning model playbooks with research backed strategies, tools, and examples
- Establish a research center

What's Resonating with the Learner-Centered Community

Ensuring broad awareness and access to resources in a variety of formats facilitates and accelerates learner-centered education for all.



5 most downloaded tools:

- [4 Guiding Principles for Learner-Centered Leadership](#)
- [Continue, Start, Stop Protocol](#)
- [Identify Your Learner-Centered Priorities](#)
- [Faculty Meeting Planning Template](#)
- [Ladder v. Knot Learning](#)

Top 5 blog posts:

- [Learning Is a Process, Not an Event](#)
- [4 Key Shifts from School-Centered to Learner-Centered](#)
- [Overcoming Objections to a Competency-Based Approach](#)
- [3 High-Impact, Low-Lift Ways to Foster Learner Agency](#)
- [You Are More Ready for Learner-Centered Than You May Think](#)



The Learner-Centered Collaborative Podcast



Top 3 podcast episodes:

- [Embracing Change in Education with George Couros](#)
- [Leaning Into Learning with Catlin Tucker](#)
- [Changing the Perspective on Teaching with Michelle Bangara](#)

Convenings &

Impactful change happens when leaders, innovators, and practitioners in diverse practices. Our regional and national convenings create opportunities for purposeful



Connected with the Learner-Centered Community and made a significant impact at large-scale education convenings.

ASU+GSV, ISTE, SXSW, SOTF 2021



Hosted in-person and livestream premiere of the documentary, *Designing Schools: The Future is a Place We Create*



Convened with partners and educators **across the nation** as we worked to bring their vision for learners to life.

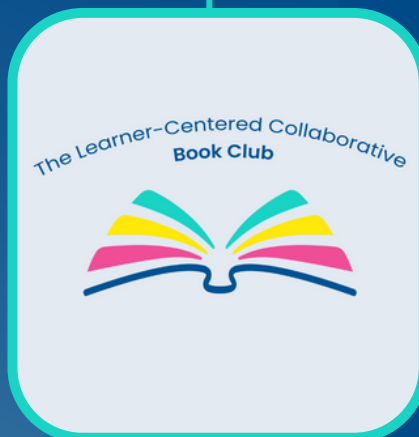
Innovation Hubs

roles and contexts work together to share and spread ideas and grow best connection that accelerates learner-centered growth nationwide and beyond.

Brought together
partners and
members of our
Ecosystem for our
**1st annual
Partner Forum**



Facilitated
2 Book Clubs
featuring books by
Katie Martin and
Devin Vodicka



League of Innovative Schools
Fireside Chat
**Inspiration from
Learner-Centered
Schools**
Tuesday, January 11, 12:00 p.m. PST



Hosted a **3-part
Fireside Chat**
webinar series
with
Digital Promise

Professional Learning

Changing how students learn starts with
changing how educators learn.

150,000+

*educators in our network shifting
towards learner-centered education*

**We've expanded our offerings
to include:**

**Diagnostic
Assessment**

**Educator
Workshops**

**Learning
Walks**

**Leadership
Coaching**

**Framework
for the
Future**

**Customized
Support**

Highlights This Year

Increasing accessibility to high-quality degree programs and learning experiences in a variety of formats that model a learner-centered approach for educators accelerates learner-centered experiences for students.



Summer Offerings

Summer is the time for reflection and inspiration. To prepare for a learner-centered school year, we offer Professional Learning Academies, Design Sessions, Webinars, Book Clubs and more designed specifically for teachers, coaches, and leaders.

Community of Practice

A Community of Practice is an effective, 60-minute workshop protocol that can be used with students and educators. Each quarter we met with nationwide groups to share ideas about a theme based focus.

[Read more](#) about benefits and tips for your next Community of Practice



WEBINAR

A FRAMEWORK FOR THE FUTURE

DON'T TRY LEADING WITHOUT ONE

DATE: TUESDAY NOV 29, 2022
TIME: 2 PM - 2:45 PM PT
LOCATION: ZOOM

Framework for the Future Webinar

A Framework for the Future is the secret behind many schools and districts making progress towards learner-centered outcomes. This model actively guides a learning community's decisions, experiences, and resources. Learn more [here](#)

Board of Directors

Learner-centered change impacts all aspects of a community and requires diversity of perspective and voice.



Dr. Devin Vodicka
CEO
Learner-Centered
Collaborative



Dr. Frankie Escobedo
Executive Director
National Center of Urban
Transformation



Kimberly Smith
CEO
Center for Inclusive
Innovation at
Digital Promise



Joseph South
Chief Learning Officer
ISTE



Eve Wachtell
Managing Partner & COO
Outside Angle



Kelly Young
Executive Director & President
Education Reimagined

Advisory Council

Our Board of Directors and Advisory Council, bring guidance and first-hand knowledge of what it takes to realize a learner-centered paradigm where all learners can thrive.



Melissa Agudelo
Principal
Lincoln High School
(San Diego Unified)



Nicole Allard
*Executive Director of
Educational Excellence &
Innovation*
Vista Unified School
District



Dr. Leighangela Brady
Superintendent
National School District



Eric Burmeister
Superintendent
Menlo Park City School
District (CA)



Eric Chagala
Founding Principal
Vista Innovation &
Design Academy



David Cook
*Director of Innovative
Learning*
Kentucky Department of
Education



Joe Erpelding
*Sr. VP of Education,
Thrively*
*Former Principal,
Design39 Campus*



Dr. Pamela Moran
Executive Director
Virginia School
Consortium for Learning



Dr. Cory Steiner
Superintendent
Northern Cass School
District (ND)



Marlon Styles
Superintendent
Middletown City School
District (OH)



Kristen Watkins
*Executive Director of
Personalized Learning &
Innovation Sustainability*
Dallas ISD

Acknowledgments

We are immensely grateful for the support, encouragement, and mentorship from so many who share our commitment to improved learning opportunities for all. We are especially fortunate to be surrounded by an amazing [team](#) and network at Learner-Centered Collaborative. The experiences of our partners, board and advisory council, and convenings of educators across the nation continue to inform and inspire our work as we reflect on what's possible when we put learners at the center.

While our vision aligns with what many of us want for learners and learner-centered practices, these efforts are not yet the norm. Join the movement of educators, leaders, changemakers, parents, and learners to support changing practices and the approach to learning. You can take action today by discovering [the next step](#) in your learner-centered journey, [connecting with our team](#), attending our upcoming [professional learning opportunity or event](#), exploring our collection of [learner-centered resources and tools](#), and [donating](#) to ignite the changes we want to see for learners. We value your support and action as we work towards a learner-centered future for all.

Contact Us

www.learnercentered.org/connect
collaborate@learnercentered.org
[@LCCollaborative](#)

LEARNER-CENTERED COLLABORATIVE
IMPACT REPORT 2022

Thank You

Together let's make your vision for learners a reality



LEARNER-CENTERED COLLABORATIVE
IMPACT REPORT 2022

